

4/2018

# GIORI



PROFESSIONAL TOOLS



Road milling / fresature stradali



Stabilishing / stabilizzazione



Trenching / scavo



Drilling foundation / perforazione per fondazioni



Horizontal directional drilling / perforazioni orizzontali



Reamer / alesatori

UNA SCELTA AFFIDABILE DALLE PRESTAZIONI ELEVATE  
**INSIEME FAREMO MOLTA STRADA**

A RELIABLE CHOICE, HIGH PERFORMANCE - TOGETHER WE WILL MAKE A LONG WAY



# Informazioni - Informations



Road milling / fresature stradali



Stabilishing / stabilizzazione



Trenching / scavo



Drilling foundation / perforazione per fondazioni



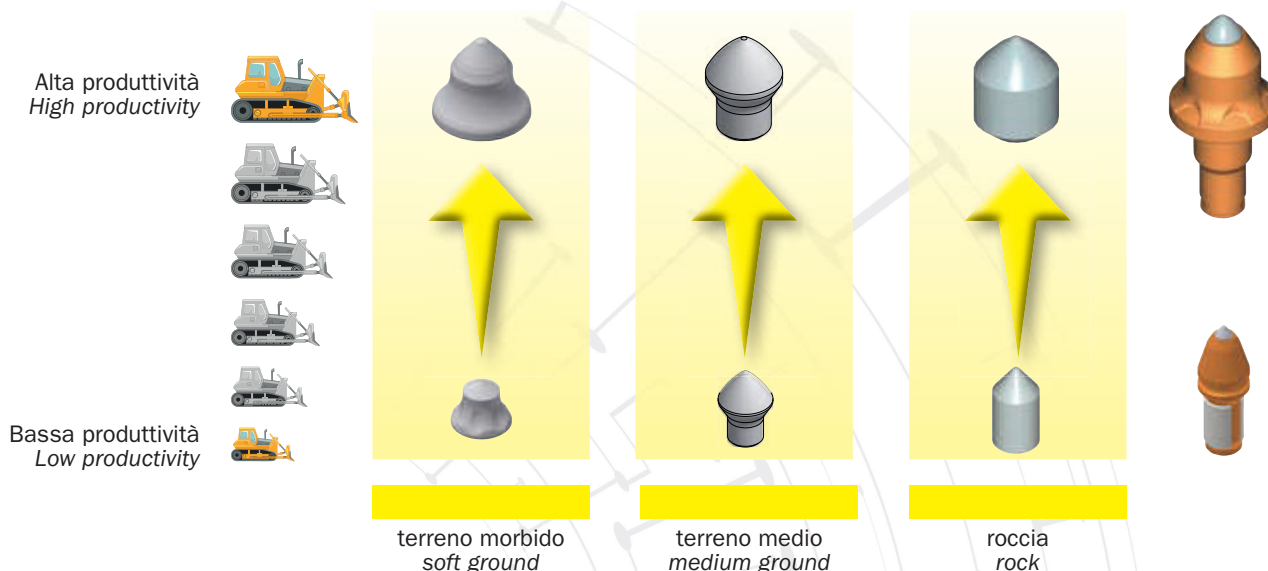
Horizontal directional drilling / perforazioni orizzontali



Reamer / alesatori



## L'utensile giusto al momento giusto The right tool for your application



**30** diametro del gambo mm / shank diameter mm

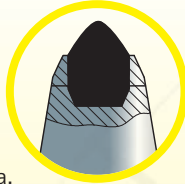
## Classificazione di durezza della roccia Rock Hardness Classification

condizioni di taglio Cutting conditions	descrizione description	caratteristiche features	esempi di rocce Rocks examples
leggere light	roccia molto tenera e non compatta, non stratificata. Compressione della roccia da 0 a 35 Mpa. <i>very soft and not solid rock, not stratified. Rock compression from 0 to 35 Mpa.</i>	bassa densità low density	Steatite/Steatite Argillite/Argillite Lignite/Lignite
medie medium	roccia tenera o medio dura, a stratificazione media. Compressione della roccia da 20-60 Mpa. <i>soft or medium / hard rock, medium. Stratification rock compression from 20-60 Mpa.</i>		Calcare/Limestone Caliche/Caliche Bauxite/Bauxite Antracite/Anthracite Marna/Marl
pesanti heavy	roccia da medio dura a dura, compatta. Compressione delle roccia tra 50-100 Mpa. <i>from medium / hard rock to hard rock solid. Rock compression between 50-100 Mpa.</i>		Dolomite/Dolomite Calcare/Limestone
complesse complicated	roccia dura e compatta a spessa stratificazione. Compressione della roccia $\geq$ 80 Mpa. <i>hard and solid rock with thick strarification. Rock compression <math>\geq</math> 80 Mpa.</i>	alta densità high density	Granito/Granite Basalto/Basalt Minerale di ferro/ Iron minerals (ematite, magnetite/hematite, magnetite)



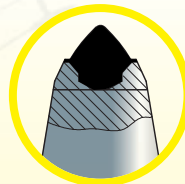
## Selezione della punta giusta per la macchina e l'applicazione Select the right tip for the machine and the application

### A SPINA CILINDRICA STRAIGHT PIN



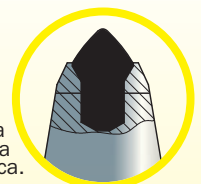
- Tenacità massima.
- Condizioni: roccia dura, roccia frantumata, roccia di cava, roccia mista e terra.
- Ideale per condizioni ad altissimo impatto.
- *Max toughness.*
- *Conditions: hard rock, crushed rock, cave rock, mixed soil rock.*
- *Ideal for very high risk conditions.*

### A CAPSULA CAPSULE



- Massima resistenza all'abrasione.
- Condizioni: materiale morbido o abrasivo.
- Ideale per condizioni ad impatti NON elevati.
- *Maximum abrasive resistance.*
- *Condition: soft or abrasive material.*
- *Ideal for not high impact conditions.*

### A FONDO STRETTO TIGHT PIN



- Combinazione tra una punta a capsula e una punta a spina cilindrica.
- Condizioni: condizioni: eccellente con materiale duro e abrasivo.
- *Combination between a capsule pin and a straight pin.*
- *Conditions: excelent with hard and abrasive material.*

### MISSION&VALUE

Giori Ricambi S.r.l. è un'azienda composta da persone giovani e responsabili che si adoperano in ogni momento per offrire ai propri clienti soluzioni concrete e facilmente fruibili attraverso un servizio accurato e accogliente. Operando in mercati sempre più esigenti, la Giori Ricambi S.r.l. ritiene necessaria una continua ed accurata considerazione del fattore qualità. Dietro ogni problema c'è un'opportunità.

Giori Ricambi S.r.l. produce una gamma completa utensili di ricambio in carburo di tungsteno cementato per scavi di fondazione, estrazione mineraria, trenching, fresatura stradale e stabilizzazione delle terre. Siamo orgogliosi di potervi offrire produttività ed efficienza.

Alla Giori Ricambi S.r.l. abbiamo una filosofia molto semplice: **offriamo il miglior prodotto possibile al miglior prezzo possibile**. Grazie ad un controllo rigoroso dei processi produttivi e all'utilizzo dei materiali più performanti, commercializziamo solo prodotti di alta qualità.

La Giori Ricambi S.r.l. offre un servizio completo a tutti gli utilizzatori di attrezzature per macchine da scavo o perforazione, dall'assistenza tecnica alla fornitura del ricambio professionale.

Professionalità, cortesia ed elevata competenza tecnica sono le caratteristiche principali che ci contraddistinguono.

Un ampio magazzino distribuito su una superficie di 1600 mq è in grado di supportare in ogni momento qualsiasi richiesta, effettuando spedizioni rapide su tutto il territorio nazionale ed internazionale.

Un parco mezzi sempre aggiornato ci consente di poter garantire un servizio rapido ed efficiente direttamente in cantiere.

La nostra officina è in grado di effettuare qualsiasi lavoro di ripristino danno strutturale/usura riportato dalle vostre attrezzature.

### MISSION & VALUE

*Giori Ricambi S.r.l. is a company with a young and responsible staff who always work to offer to their customers concrete and easy to use solutions through an accurate and friendly service. Operating in an increasingly demanding market, Giori Ricambi S.r.l. considers necessary to maintain a constant and accurate consideration of the quality factor.*

*Behind any problem, there is an opportunity. Giori Ricambi S.r.l. manufactures a complete range of tungsten carbide tools for foundation excavation, mining, trenching, road, road milling and soil stabilization.*

*We are proud to offer you productivity and efficiency.*

*At Giori Ricambi S.r.l. we have a very simple philosophy: we offer you the best possible product, at the best possible price. Thanks to a strict production processes control and the use of the most powerful materials, we only market products with high quality standards.*

*Giori Ricambi S.r.l. offers a full service to all users of excavator or drilling equipment, from technical assistance to professional spare parts. A large warehouse of 1600 Smq is able to support any request at any time, making fast shipments throughout national and international territory. Ever - updated vehicles enable us to guarantee a fast and efficient service directly on site. Our workshop is able to perform any structural damage/wear recovery reported by your equipment.*





FORNITURA  
SUPPLY



ASSISTENZA  
ASSISTANCE



CONSULENZA  
ADVICE



PROGETTAZIONE  
PLANNING



### **POLICY**

Le Informazioni contenute in questo catalogo costituiscono una guida di riferimento alla gamma prodotti Giori Ricambi Professional Tools; questi sono soggetti a modifiche e migliorie, la Giori Ricambi S.r.l. si riserva il diritto di apportare modifiche ai dati tecnici in ogni momento e senza alcun tipo di preavviso. Questo catalogo NON può essere riprodotto interamente o parzialmente senza il consenso scritto della Giori Ricambi S.r.l.

Alcune informazioni usate per redigere il presente catalogo provengono da esistenti documenti tecnici dei quali la Giori Ricambi S.r.l. non può essere tenuta responsabile per possibili errori.

per sapere di più sulla gamma completa dei prodotti Giori Ricambi Professional Tools contatti il numero +039 0365823280 o scriva una mail a [info@gioriricambi.it](mailto:info@gioriricambi.it)

### **POLICY**

The informations contained in this catalogue represent a reference guide to the range of products sold by Giori Ricambi Professional Tools; those are subjects to modifications and improvements. Giori Ricambi S.r.l. reserves the right to modify the technical informations in every moment and without notice. This catalogue can't be reproduced, entirely or partially, without express written consent by Giori Ricambi S.r.l. Some of the informations used to edit this catalogue come from existing technical documents, in case of error Giori Ricambi S.r.l. can't be considered in charge.

To know more on the range of products and services by Giori Ricambi Professional Tools, please contact +39 (0) 3 65823280, or write to [info@gioriricambi.it](mailto:info@gioriricambi.it)



# Fresatura stradale

## Road milling





## GRC10

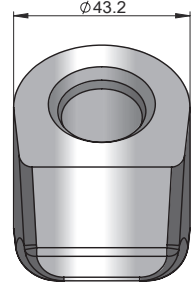
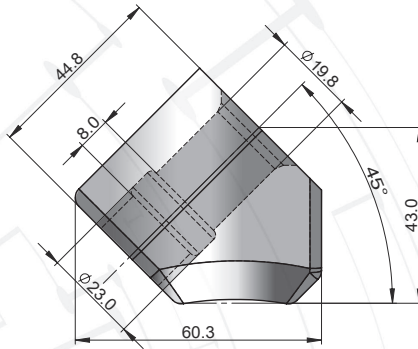
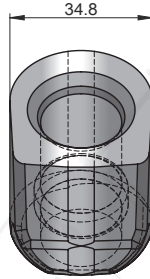
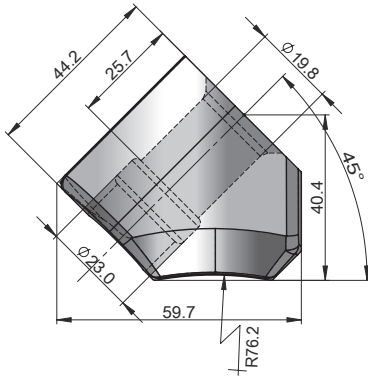


Supporto diametro 19.8  
Toolholder diameter 19.8

## GRC10HD



Supporto diametro 19.8  
rinforzato  
Toolholder diameter 19.8 HD



Size		
	Soft	50 pz

Size		
	Hard	50 pz

## GR18

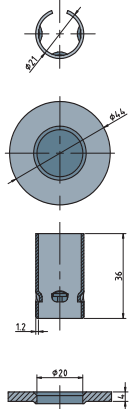
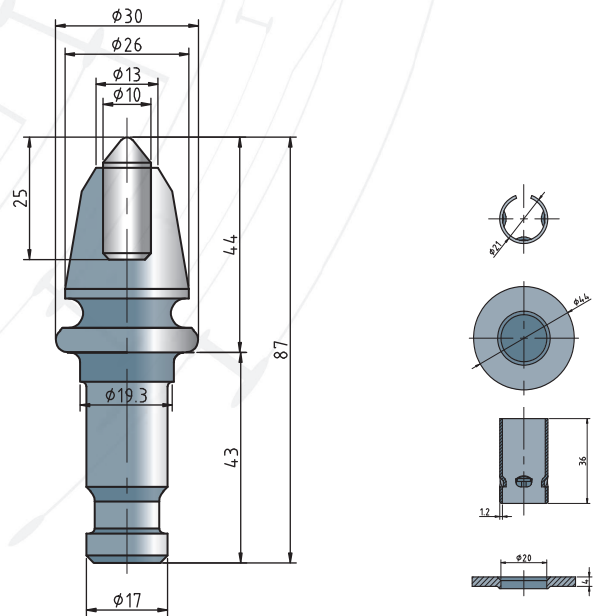
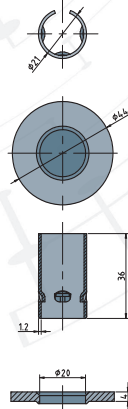
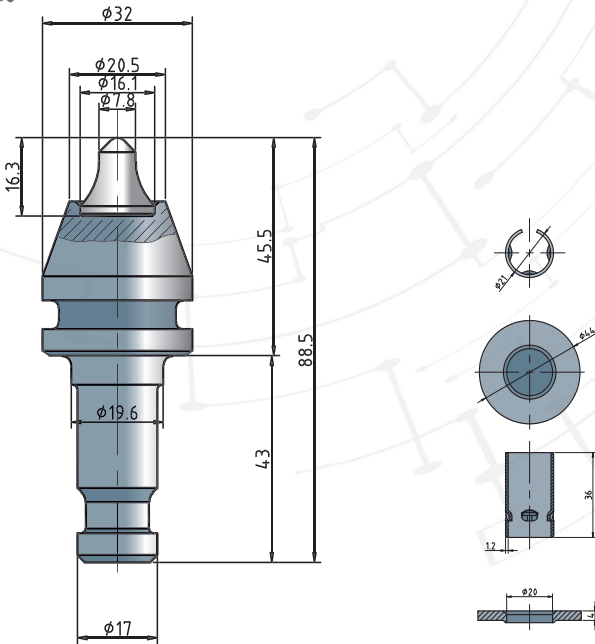


Picco diametro 19.8 inserto 16x16.3.  
Tool diameter 19,8 insert 16x16.3.

## GRW10



Picco diametro 19.8 inserto 10x25.  
Tool diameter 19.8 insert 10x25.



Size		
	Soft	50 pz

Size		
	Hard	50 pz



# Fresatura stradale

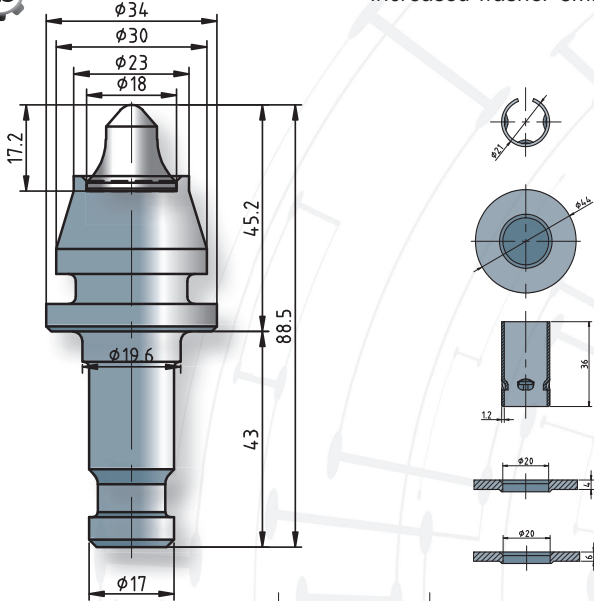
## Road milling

### GR24

Picco diametro 19.8 inserto 18x17.2.  
Tool diameter 19,8 insert 18x17.2.

### GR24-1

Picco diametro 19.8 inserto 18x17.2  
rondella 6mm.  
Tool diameter 19,8 insert 18x17.2  
increased washer 6mm.



Size

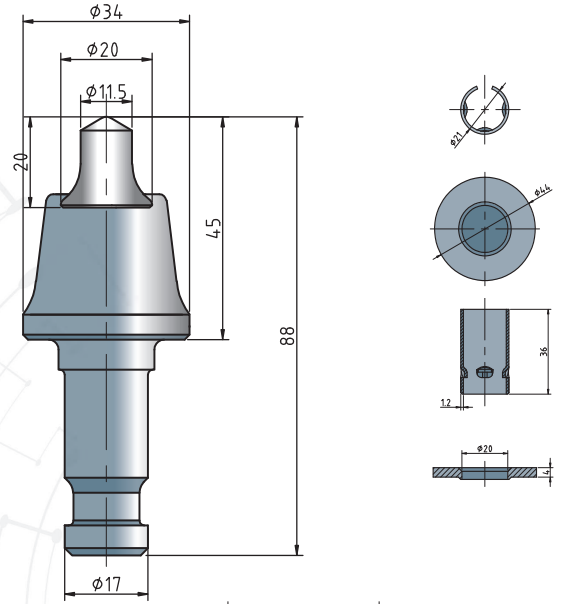


Medium

50 pz

### GR7

Picco diametro 19.8 inserto 20x20.  
Tool diameter 19.8 insert 20x20.



Size

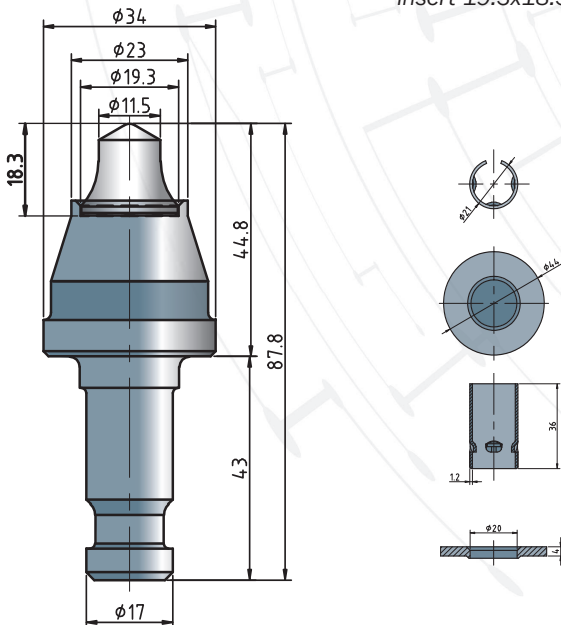


Hard

50 pz

### GRZ4-01

picco diametro 19.8  
inserto 19.3x18.3.  
tool diameter 19.8  
insert 19.3x18.3.



Size

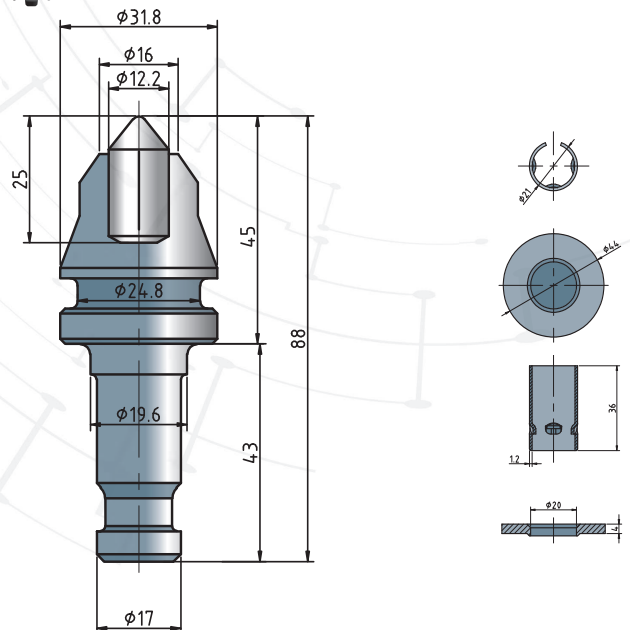


Medium

50 pz

### GR21

picco diametro 19.8 inserto 12.2x25.  
tool diameter 19.8 insert 12.2x25.



Size



Hard

50 pz

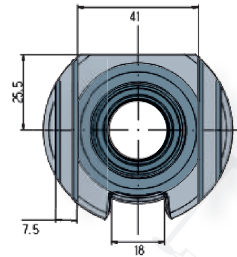
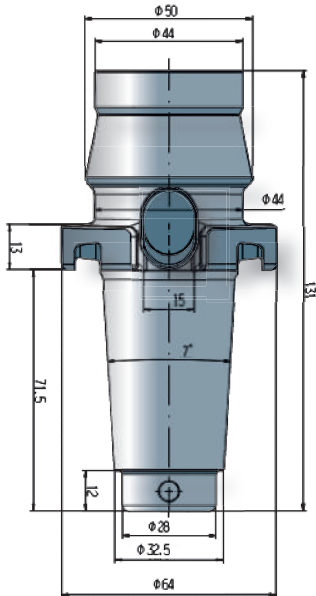


## GR4559



Supporto diametro 19.8  
tipo Cat/Bitelli

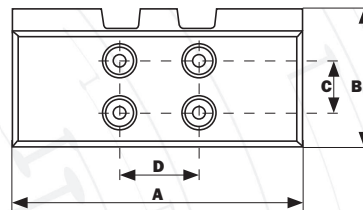
toolholder diameter 19.8 type Cat/Bitelli



Size		
	Medium	50 pz

## PATTINO sliding block

In poliuretano ad alta  
resistenza all'abrasione.  
In polyurethane  
to high abrasion resistance.



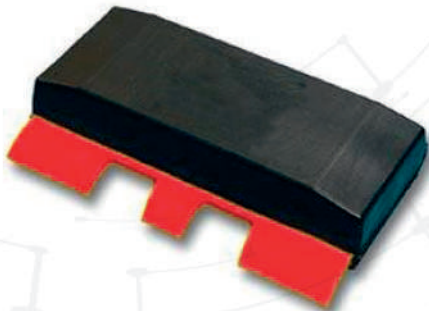
Dimensioni mm / Dimensions mm			
A	B	C	D
225	112	52	86
260	112	52	86
300	140	52	86
300	140	57	88,9

- Fornitura completa di suola metallica
- **NOTA: Realizzabili anche in misure differenti**
- Complete supply of metal soil
- **NOTE: Available also in different sizes**

## SOVRAPATTINO pad

In poliuretano ad alta resistenza all'abrasione  
e costi manutenzione contenuti.

In polyurethane with high abrasion resistance  
and low maintenance costs.



- 4 fori di fissaggio su Vs. piastra esistente
- Viene sostituito unicamente il pattino mentre la piastra rimane fissa al cingolo
- **NOTA: Realizzabili anche in misure differenti**

- 4 fixin holes on your existing plate
- Only the pad is replaced remains fixed to the "track"
- **NOTE: Available also in different sizes**

Misura mm Dimension mm	Interasse fori center to center
260	190x52
300	228x57

Sovrapattino  
in poliuretano  
Polyurethane pad

Fori già esistenti  
(da forare se non presenti)  
Exsting holes (to drill if not present)

Vostra piastra esistente  
(non inclusa nella fornitura)  
Your existing plate  
(not included in the supply)



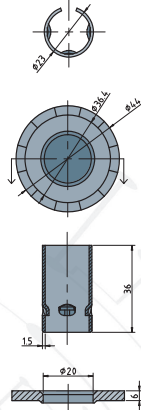
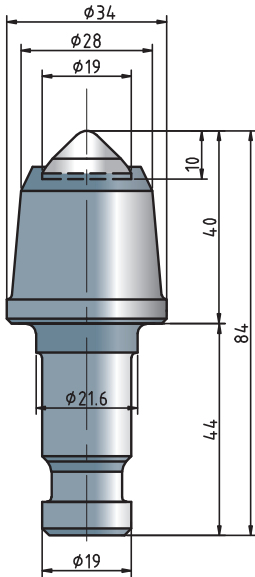
# Stabilizzazione Stabilishing





## GRW6C

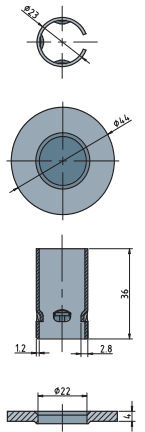
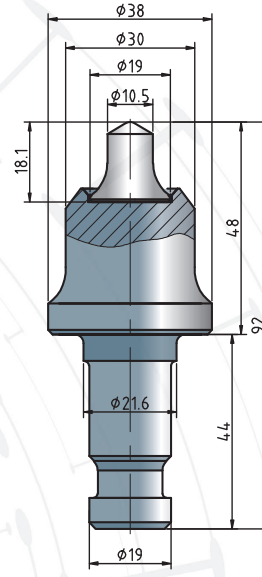
Picco diametro 22 inserto 19x10.  
Tool diameter 22 insert 19x10.



Size		
	Hard	50 pz

## GRW6-22

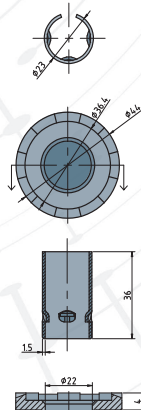
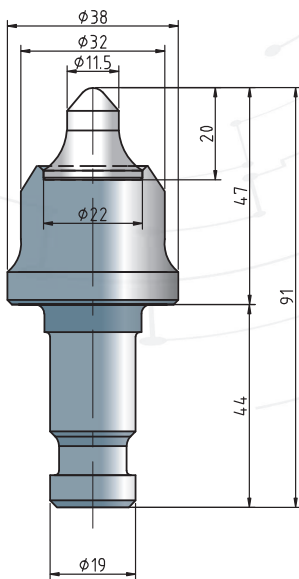
Picco diametro 22 inserto 19x18.1.  
Tool diameter 22 insert 19x18.1.



Size		
	Medium	50 pz

## GRW8-22

picco diametro 22 inserto 22x20.  
tool diameter 22 insert 22x20.



Size		
	Hard	50 pz



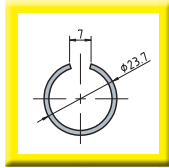
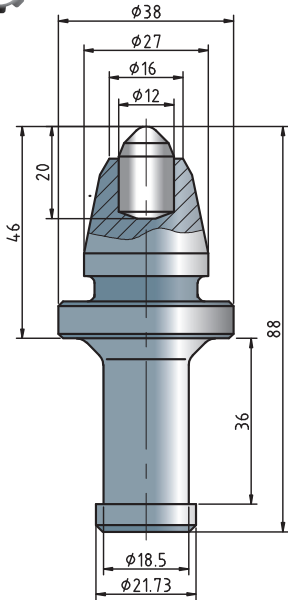
# Scavo Trenching





## GRSM06

Picco diametro 22 inserto 12x20.  
Tool diameter 22 insert 12x20.

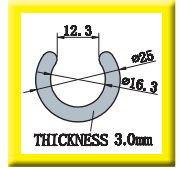
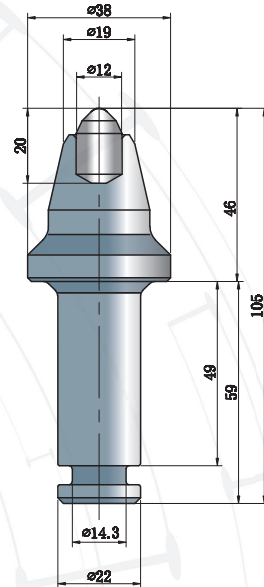


**Retained GRSM06**  
Fermo aggiuntivo venduto singolarmente  
Additional retainers sold separately

Size		
	Hard +	60 pz

## GRSL07 with clip

Picco diametro 22 inserto 12x20.  
Tool diameter 22 insert 12x20.

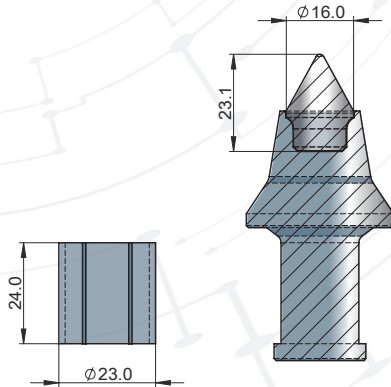
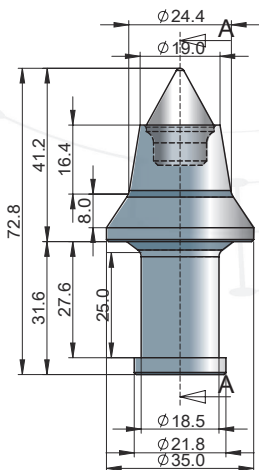


**Retained GRSL07**  
Fermo aggiuntivo venduto singolarmente  
Additional retainers sold separately

Size		
	Hard +	50 pz

## GRVE22

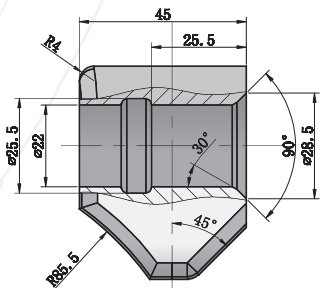
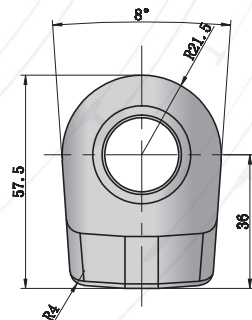
Picco diametro 22 inserto 16x23.1.  
Tool diameter 22 insert 16x23.1.



Size		
	Hard +	80 pz

## GRC87HD

supporto diametro 22 HD.  
toolholder diameter 22 HD.



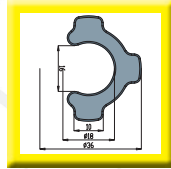
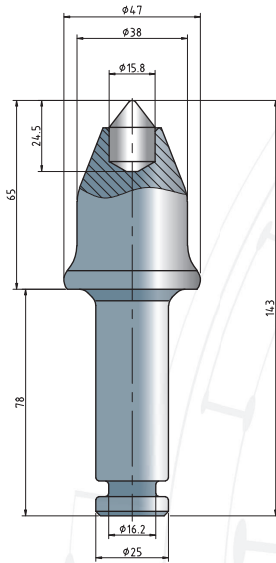
Size		
	-	-



## GRC35R with clip



Picco diametro 25  
inserto 15.8x24.5.  
Tool diameter 25  
insert 15.8x24.5.



Retained  
GRC35R

Fermo aggiuntivo  
venduto singolar-  
mente

Additional retainers  
sold separately

Size



Hard

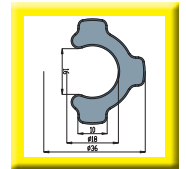
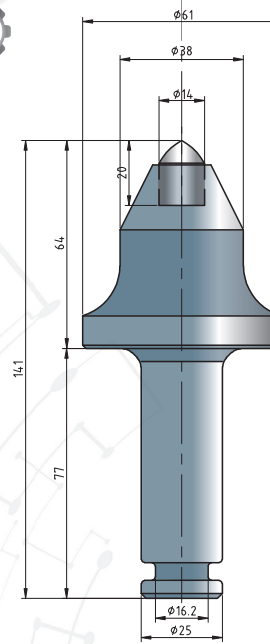


25 pz

## GRT5X with clip



Picco diametro 25  
inserto 14x20.  
Tool diameter 25  
insert 14x20.



Retained  
GRT5X

Fermo aggiuntivo  
venduto singolar-  
mente

Additional retainers  
sold separately

Size



Hard

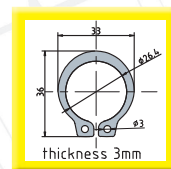
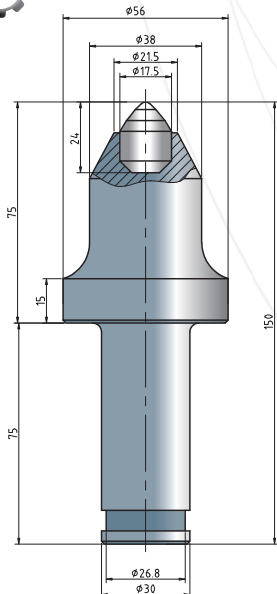


20 pz

## GRK1-75 with clip



Picco diametro 30 inserto 17,5x24.  
Tool diameter 30 insert 17.5x24.



Retained  
GRK1-75

Fermo aggiuntivo  
venduto singolar-  
mente

Additional retainers  
sold separately

Size



Hard

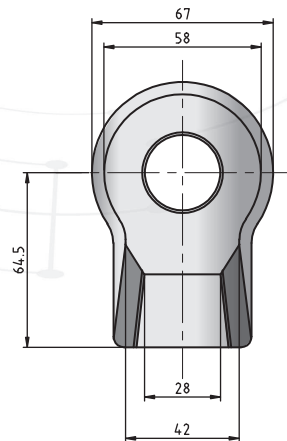
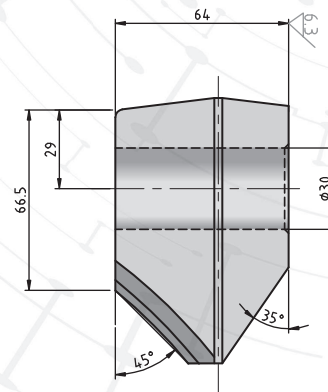


15 pz

## U43HGR-30



Supporto diametro 30.  
Toolholder diameter 30.



Size



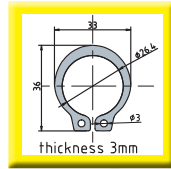
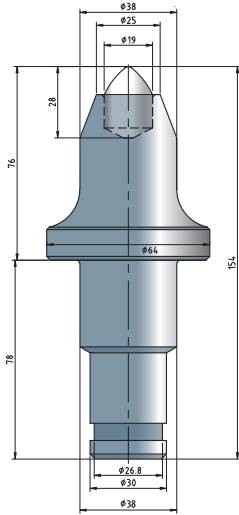
-



10 pz

## GRTS7 with clip

Picco diametro 30/38 inserto 19x28.  
Tool diameter 30/38 insert 19x28.



Retained  
GRTS7

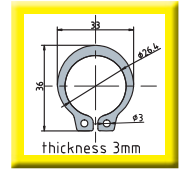
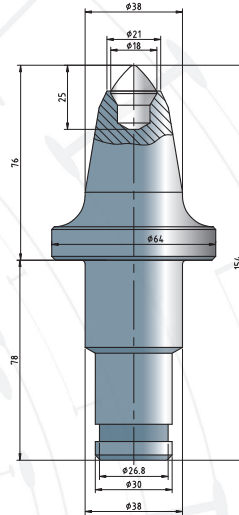
Fermo aggiuntivo  
venduto singolar-  
mente

Additional retainers  
sold separately

Size		
	Hard ++	12 pz

## GRTS19 with clip

Picco diametro 30/38 inserto 18x25.  
Tool diameter 30/38 insert 18x25.



Retained  
GRTS19

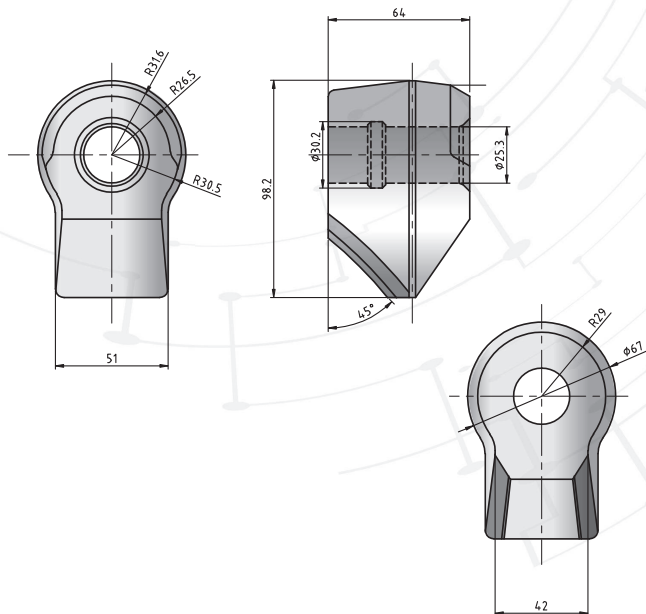
Fermo aggiuntivo  
venduto singolar-  
mente

Additional retainers  
sold separately

Size		
	Medium	15 pz

## GRC30H

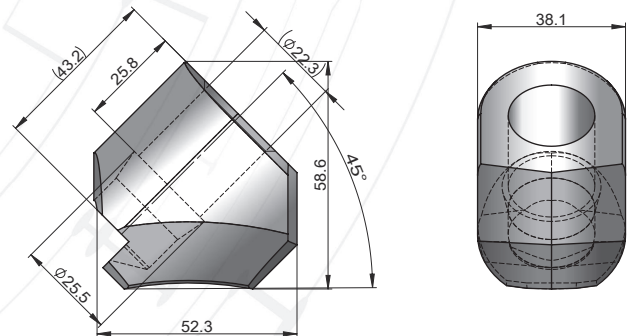
Supporto diametro 25.  
Toolholder diameter 25.



Size		
	-	10 pz

## GRC87GB

Supporto diametro 22.  
Toolholder diameter 22.



Size		
	-	35 pz



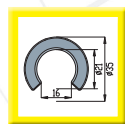
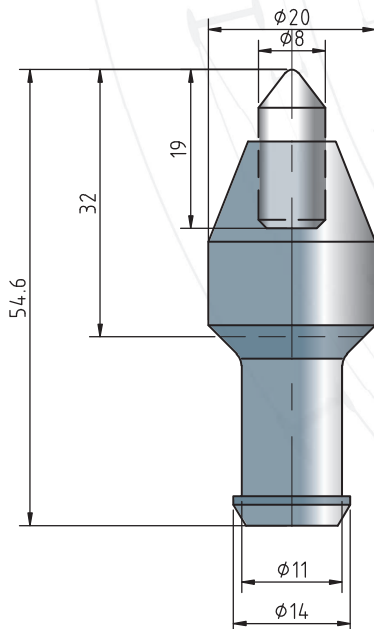
# Perforazione orizzontale/direzionale Horizontal directional drilling



## BM56



Picco diametro 14.  
Tool diameter 14.

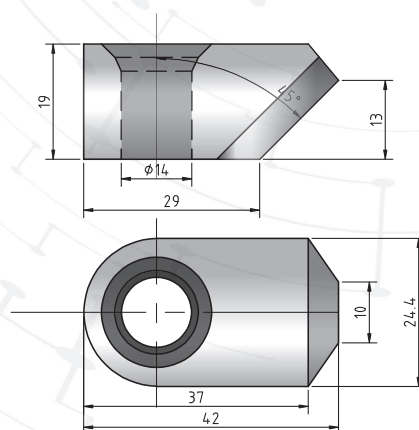


**Retained BM56**  
fermo aggiuntivo  
venduto singolar-  
mente  
Additional retainers  
sold separately

## BHR171



Supporto diametro 14.  
Toolholder diameter 14.



Size		
	Hard	200 pz

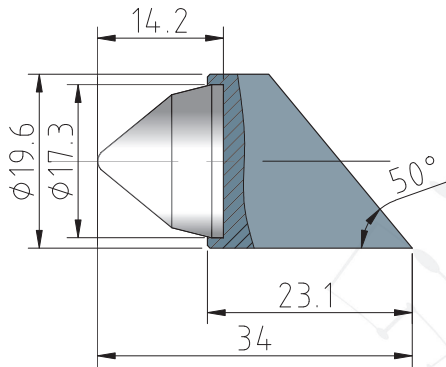
Size		
	-	150 pz



# Perforazione orizzontale/direzionale horizontal directional drilling

## GBR1

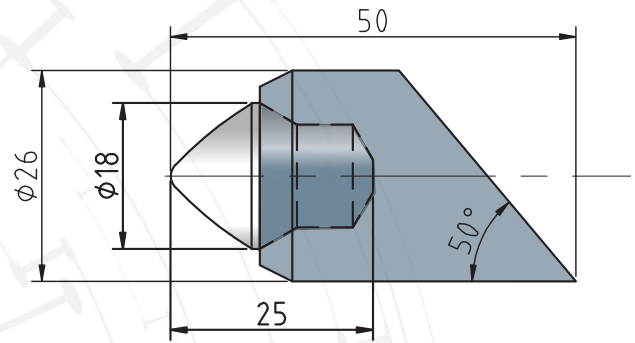
Alesatore inserto 17.3x14.2.  
Reamer tungsten carbide insert 17.3x14.2.



Size		
  	soft/medium	200 pz

## GBR3

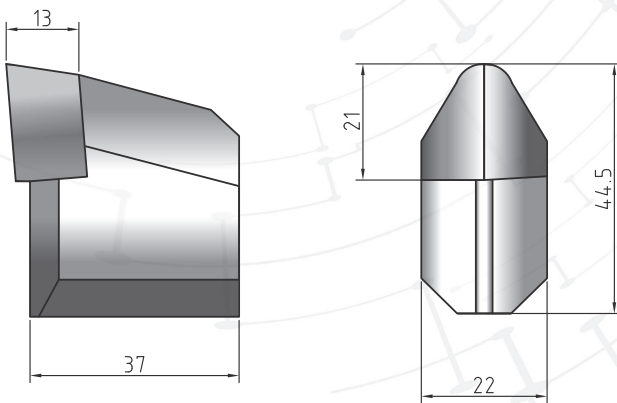
Alesatore inserto 18x25.  
Reamer tungsten carbide insert 18x25.



Size		
  	Hard	100 pz

## GRT2

Allargatore inserto 13x21.  
Reamer tungsten carbide insert 13x21.



Size		
  	Hard	100 pz



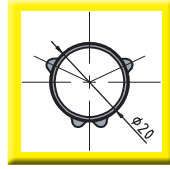
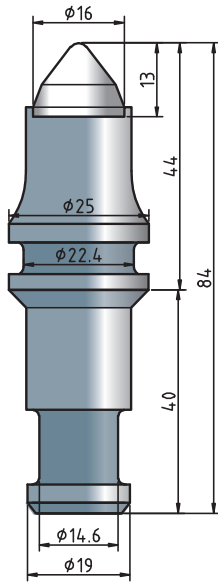
# Perforazione fondazioni Drilling foundation





## GRC23

Picco diametro 19 inserto 16x13.  
Tool diameter 19 insert 16x13.

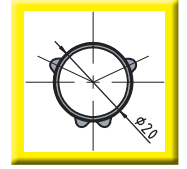
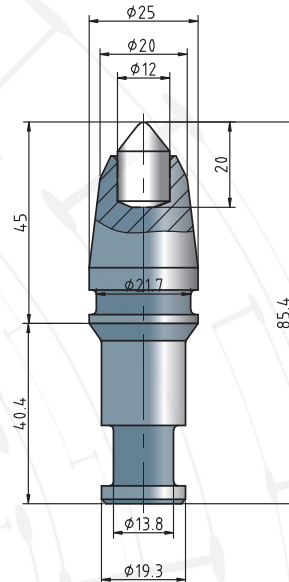


**Retained GRC23**  
Fermo aggiuntivo venduto singolarmente  
Additional retainers sold separately

Size		
	soft	100 pz

## GR21HD

Picco diametro 20 inserto 12x20.  
Tool diameter 20 insert 12x20.



**Retained GRC21HD**  
Fermo aggiuntivo venduto singolarmente  
Additional retainers sold separately

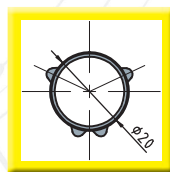
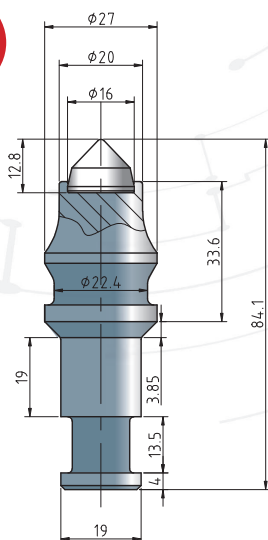
Size		
	Hard +	100 pz

## GRL09

Picco diametro 20 inserto 16x12.8.  
Tool diameter 20 insert 16x12.8.



**NEW**

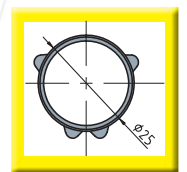
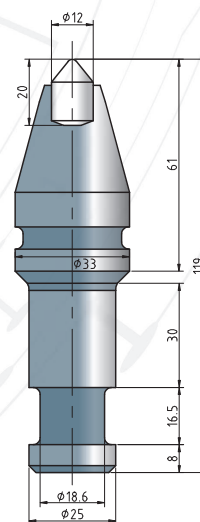


**Retained GRL09**  
Fermo aggiuntivo venduto singolarmente  
Additional retainers sold separately

Size		
	soft	100 pz

## GR31HD

Picco diametro 25 inserto 12x20.  
Tool diameter 25 insert 12x20.



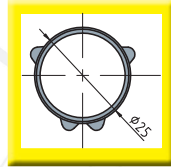
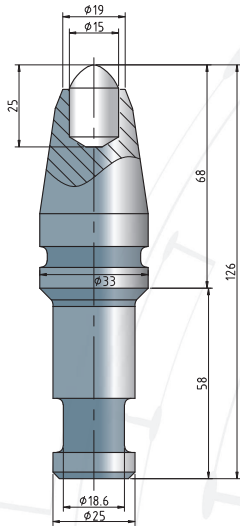
**Retained GRC31HD**  
Fermo aggiuntivo venduto singolarmente  
Additional retainers sold separately

Size		
	Hard +	40 pz



## GRU40HD

Picco diametro 25 inserto 15x25.  
Tool diameter 25 insert 15x25.

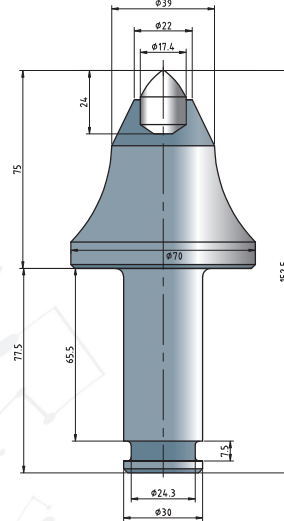


**Retained GRU40HD**  
Fermo aggiuntivo venduto singolarmente  
Additional retainers sold separately

Size		
	Hard ++	30 pz

## BGF10

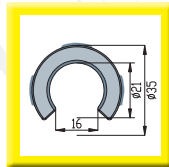
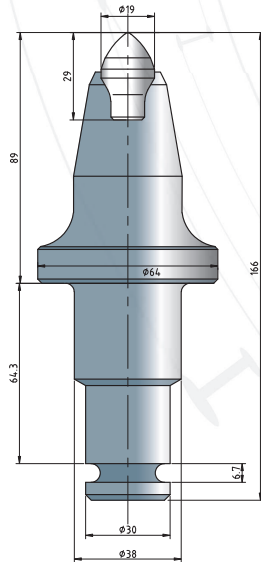
Picco diametro 30 inserto 17.5x24.  
Tool diameter 30 insert 17.5x24.



Size		
	Hard	10 pz

## GRTS35CX with clip

Picco diametro 30/38 inserto 19x29.  
Tool diameter 30/38 insert 19x29.

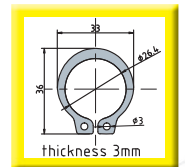
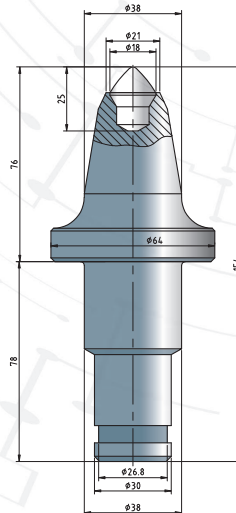


**Retained GRTS35CX**  
Fermo aggiuntivo venduto singolarmente  
Additional retainers sold separately

Size		
	Hard	10 pz

## GRTS19 with clip

Picco diametro 30/38 inserto 18x25.  
Tool diameter 30/38 insert 18x25.



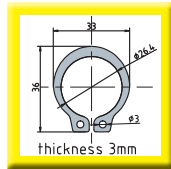
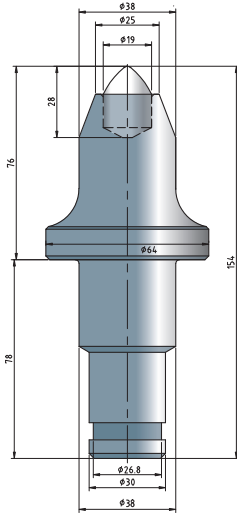
**Retained GRTS19**  
Fermo aggiuntivo venduto singolarmente  
Additional retainers sold separately

Size		
	Medium	15 pz



## GRTS7 with clip

Picco diametro 30/38 inserto 19x28.  
Tool diameter 30/38 insert 19x28.



Retained  
GRTS7

Fermo aggiuntivo  
venduto singolarmente

Additional retainers  
sold separately

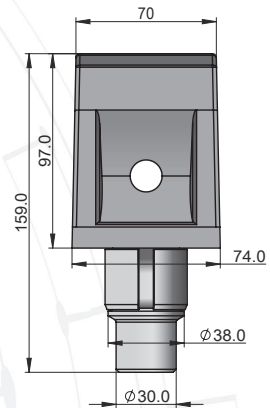
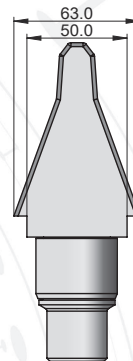
Size		
	hard ++	12 pz

## GRBFZ69

Dente diametro 30/38.  
Teeth diameter 30/38.



NEW



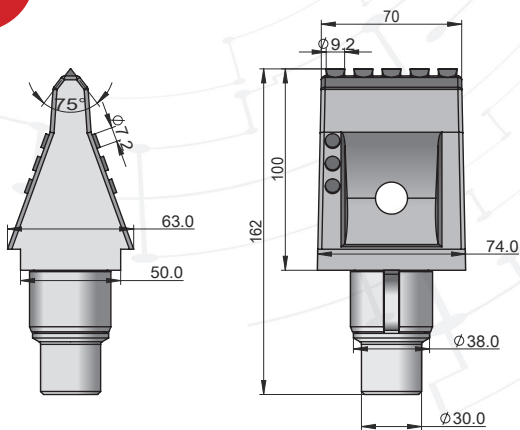
Size		
	hard	5 pz

## GRBFZ172

Dente diametro 30/38  
inserto 9.2.  
Teeth diameter 30/38  
insert 9.2.



NEW

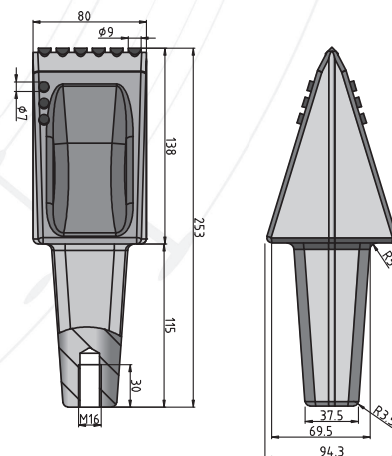


Size		
	hard	5 pz

## GRBFZ317

Dente piatto inserti da 9.  
flat teeth tungsten carbide 9.

NEW



Size		
	hard	3 pz

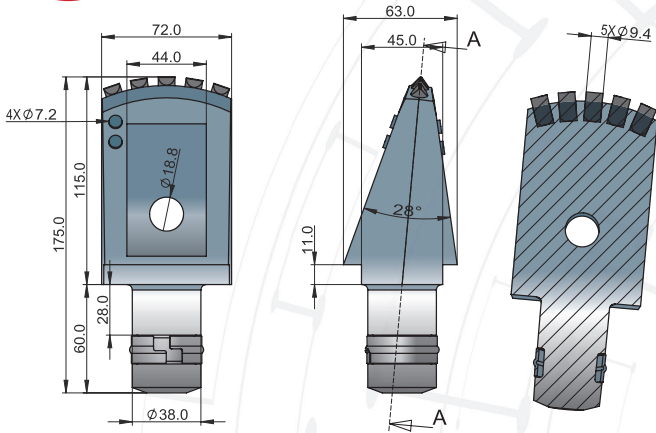


## GRFHZ72

Dente diametro 38 inserto 9.4.  
Teeth diameter 38 insert 9.4.



**NEW**

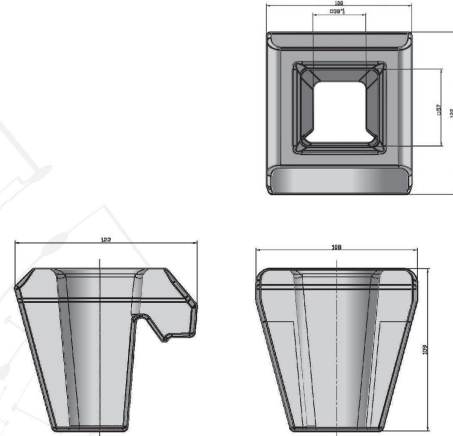


Size		
	hard	5 pz

## GRBHR73

Supporto dente piatto.  
Toolholder flat teeth.

**NEW**



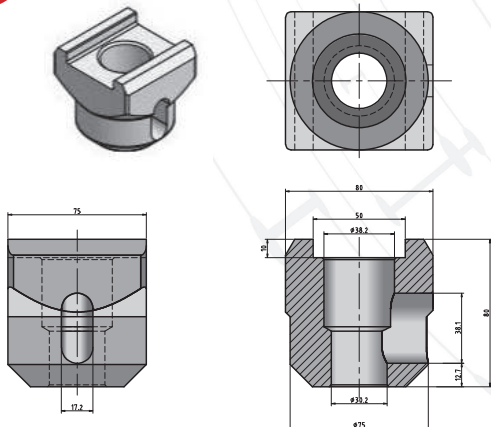
Size		
	hard	3 pz

## GRBHR112

Supporto dente diametro 30/38.  
Toolholder teeth diameter 30/38.



**NEW**



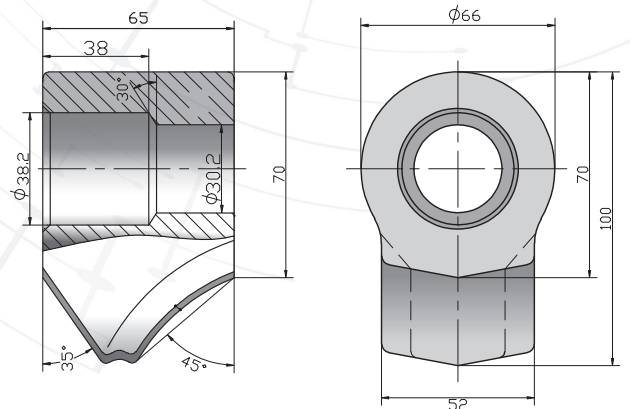
Size		
	hard	5 pz

## GRB43H

Supporto diametro 30/38.  
Toolholder diameter 30/38.



**NEW**



Size		
	hard	5 pz



## U43HGR-30



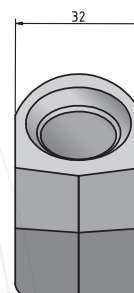
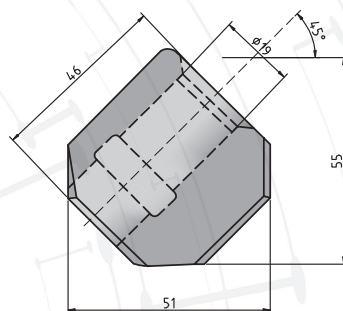
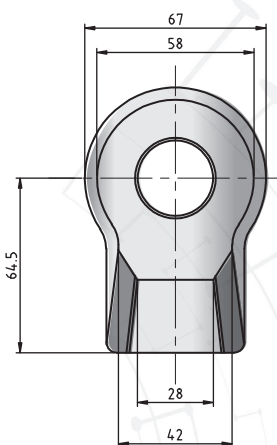
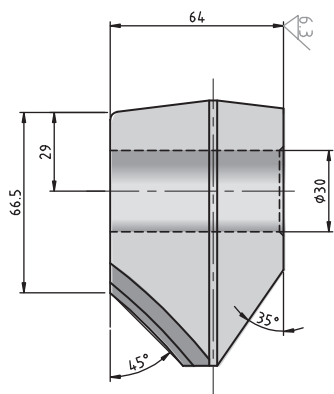
Supporto diametro 30.  
Toolholder diameter 30.

## GRC20



Supporto diametro 19.  
Toolholder diameter 19.

**NEW**



Size		
  	-	10 pz

Size		
  	hard	5 pz



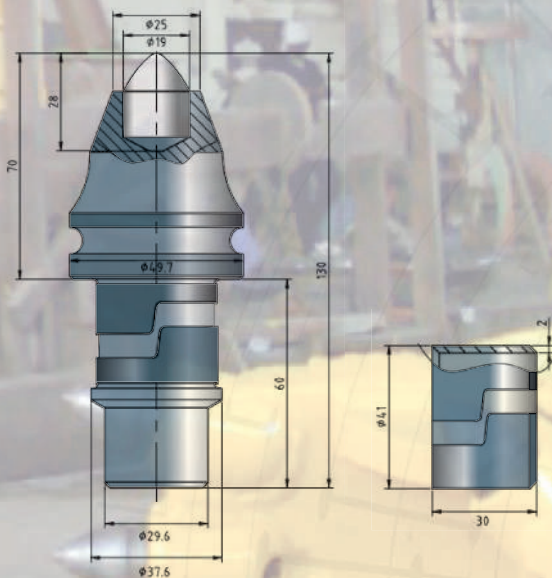
**NEW**

# Perforazione fondazioni - drilling foundation

## GRDS01

Picco diametro 30/38  
inserto da 19x28.

Tool diameter 30/38 insert 19x28.

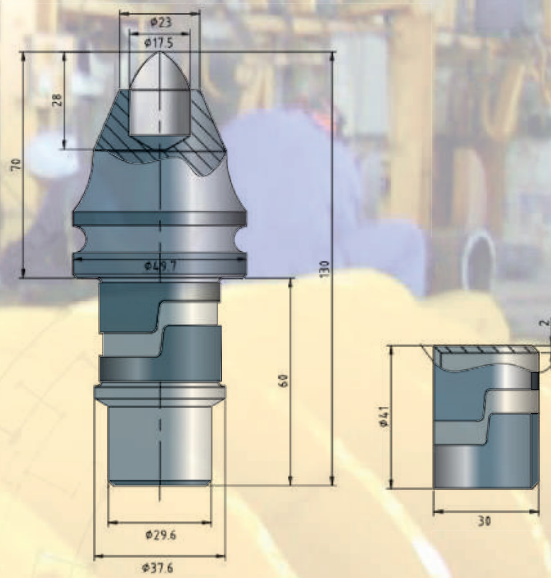


Size		
	Hard ++	20 pz

## GRDS04

Picco diametro 30/38  
inserto da 17.5x28.

Tool diameter 30/38 insert 17.5x28.

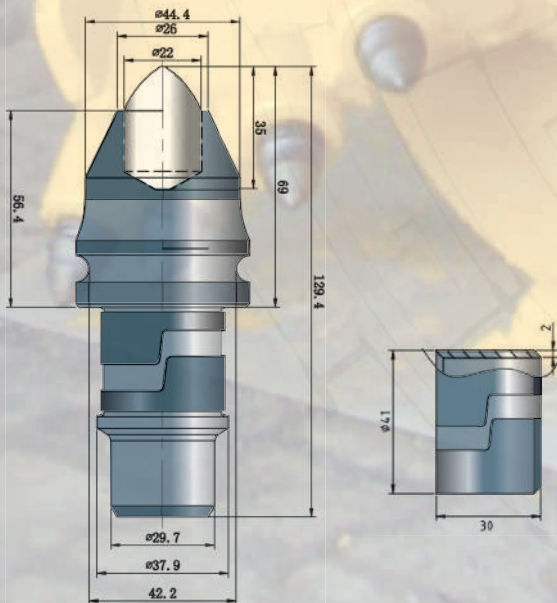


Size		
	Hard ++	20 pz

## GRDS05

Picco diametro 30/38  
inserto da 22x35.

Tool diameter 30/38 insert 22x35.



Size		
	Hard ++	20 pz









## portacapsula/adapter

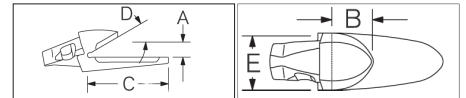
Tipo/Type 51



Tipo/Type 52



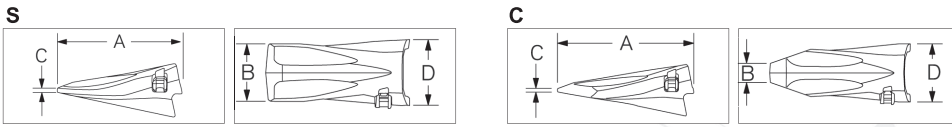
Tipo/Type 7



Riferimento Reference	Tipo Type	A mm.	B mm.	C mm.	D mm.	E mm.	Nasello (°) Nose	Peso Weight	Macchina Tipo Type of Machine
<b>3895-U20</b>	51	N/A	105	113	0	75	30 o 10	3,7	trivella/benna mordente drill/clamshell
<b>3898-U20</b>	52	N/A	123	N/A	0	75	9	3,7	trivella/benna mordente drill/clamshell
<b>3895-U25</b>	51	N/A	136	144	0	90	30 o 10	7,2	benna mordente clamshell
<b>3898-U25</b>	52	N/A	187	N/A	0	90	9	6,6	benna mordente clamshell
<b>3871A-U30</b>	7	35	54	190	30	102	10	6,7	benna mordente clamshell
<b>3898-U30</b>	52	N/A	211	N/A	0	102	9	9,7	benna mordente clamshell
<b>3872A-U35</b>	7	40	65	216	30	115	10	10,7	benna mordente clamshell
<b>3898-U35</b>	52	N/A	238	N/A	0	115	15	13,7	benna mordente clamshell
<b>3802A-U35</b>	51	N/A	310	N/A	N/A	115	15	13,7	benna mordente clamshell
<b>3898-U40</b>	52	N/A	268	N/A	0	129	9	19,7	benna mordente clamshell
<b>3898-U45</b>	52	N/A	299	N/A	0	144	5	27,3	benna mordente clamshell



## capsula/point



Riferimento Reference	Descrizione Description	A mm.	B mm.	C mm.	D mm.	Peso Weight
<b>U20S</b>	standard	176	69	7	78	2,0
<b>U20C</b>	roccia/rock	191	27	10	78	2,0
<b>U25S</b>	standard	211	82	8	93	3,4
<b>U25C</b>	roccia/rock	229	31	10	93	3,4
<b>U30S</b>	standard	240	91	10	105	5,0
<b>U30C</b>	roccia/rock	259	36	9	105	5,0
<b>U35S</b>	standard	265	102	11	119	7,0
<b>U35C</b>	roccia/rock	291	40	13	119	7,0
<b>U40S</b>	standard	294	122	12	134	9,9
<b>U40C</b>	roccia/rock	328	45	9	134	10,0
<b>U45S</b>	standard	328	129	13	149	14,0
<b>U45C</b>	roccia/rock	366	50	10	149	14

### DENTI Teeth

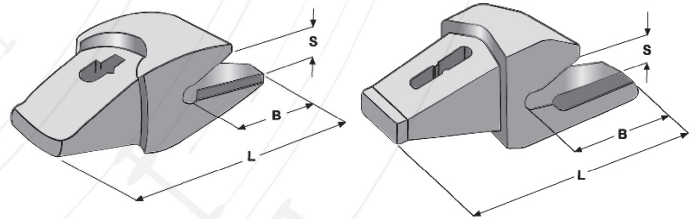
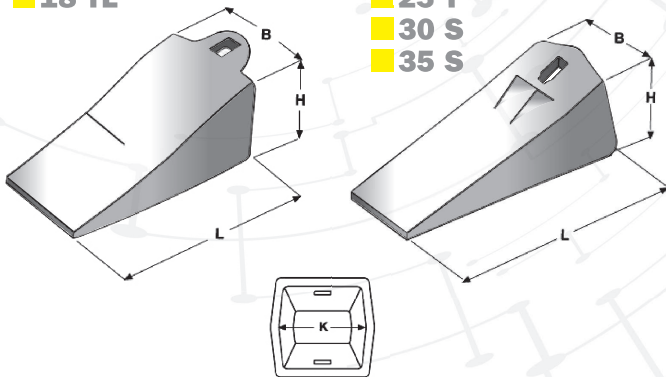
### PORTADENTI Adapter

**18 TL**

■ **25 S**  
■ **25 T**  
■ **30 S**  
■ **35 S**

**833-18**

**855-25**



Art.	Dimensioni / Dimensions				Peso Weight
	L	B	H	K	
<b>18 TL</b>	120	56	52	45	1,1
<b>25 S</b>	165	79	61	64	2,1
<b>25 T</b>	165	79	61	64	2,1
<b>30 S</b>	165	93	68	75	2,8
<b>35 S</b>	191	107	68	89	3,6

Art.	Dimensioni / Dimensions			Peso Weight
	L	B	S	
<b>833-18</b>	170	95	21	1,6
<b>855-25</b>	215	131	28	3,3



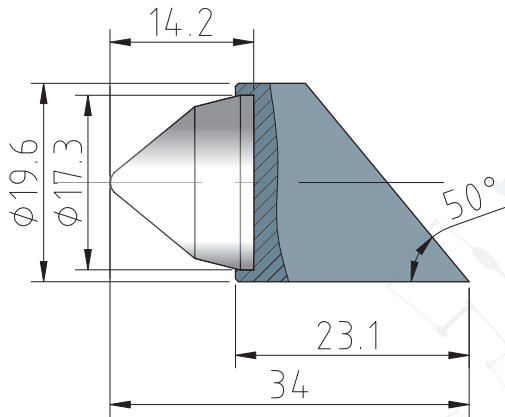
# Alesatori reamer






## GBR1

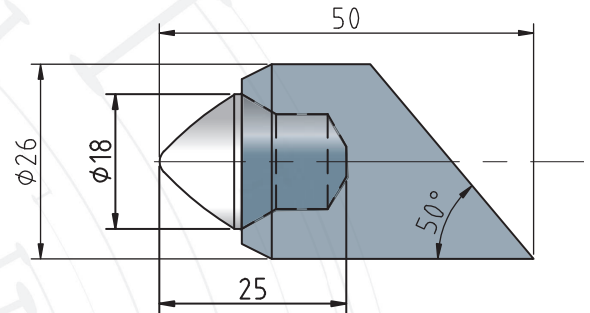
Alesatore inserto 17.3x14.2.  
Reamer tungsten carbide insert 17.3x14.2.



Size		
  	soft/medium	200 pz

## GBR3

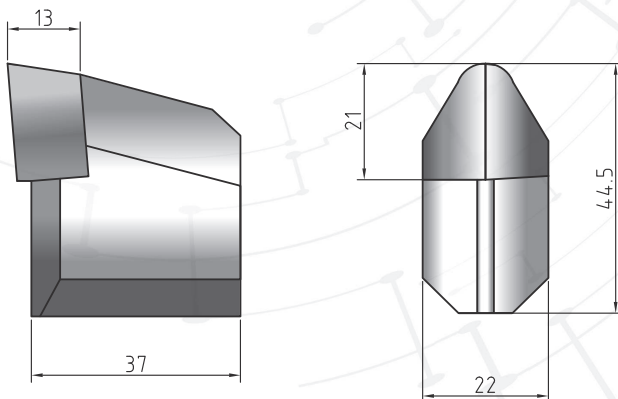
Alesatore inserto 18x25.  
Reamer tungsten carbide insert 18x25.



Size		
  	hard	100 pz

## GRT2

Allargatore inserto 13x21.  
Reamer tungsten carbide insert 13x21.



Size		
  	Hard	100 pz



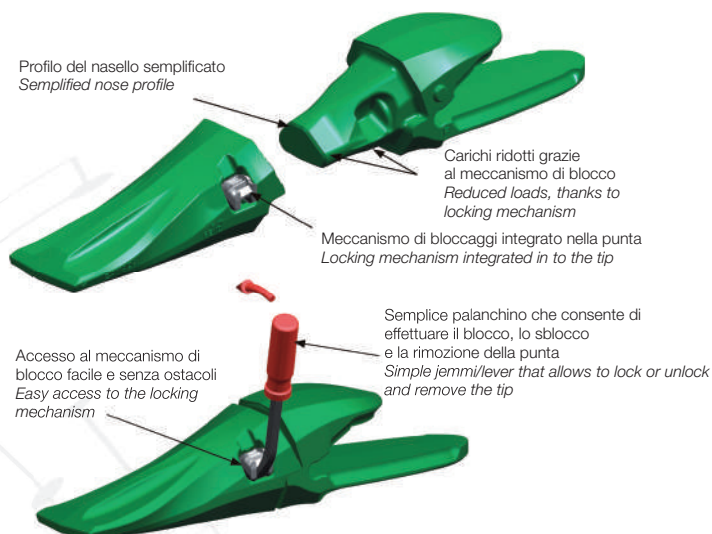
## SISTEMA ULTRALOK®/ ULTRALOK® SISTEM

Il sistema di denti **Ultralok®** è un sistema innovativo e rivoluzionario in quanto composto da due elementi, con un meccanismo di bloccaggio integrato nella punta.

Il sistema di denti **Ultralok®** è effettivamente un sistema che non richiede l'uso del martello. Ne risulta una maggiore sicurezza, una riduzione dell'inventario e una sostituzione sul campo semplificata.

*The Ultralok teeth system is a an innovative e revolutionary system as it consist in two elements, with an integrated locking mechanism in the tip.*

*The Ultralok teeth system is a system that does not require hammer use. This results an increased security, reduced inventory and a simplified replacement on site.*



## LAME E SOTTOLAME/ BLADES AND UNDERBLADES

Disponiamo di taglienti a delta, taglienti ad uno smusso, due smussi con dimensioni standard oppure tagliati a misura in acciaio oppure acciaio naturale HB250 e bonificato HB400 - HB500.

Le sottolame sotto progettate utilizzando profili acciaio con durezza HB400 oppure HB500, così da poter essere più resistenti e di conseguenza avere una durata superiore alla concorrenza. Interchangeabili con gli originali Caterpillar, Volvo, Hitachi, Doosan, Case, New Holland, Liebherr, Hyundai.

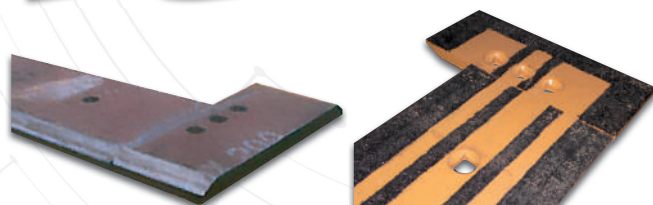
Su richiesta è possibile avere sottolame in acciaio Esco Max-Temp Carbide sia nelle dimensioni originali che su misura. Il carbide è un prodotto costituito da una lama base in acciaio Max-Temp a cui vanno applicati dei riporti in carburo di tungsteno della lunghezza ciascuno di 1" (25,4 mm) mediante un processo metallurgico. Il carburo di tungsteno poiché ha mediamente una durezza di 700 HB rende così la sottolama circa 3,5 volte più resistente in termini di durata agli standard.

A richiesta forniamo sottolame in profili standard o su misura in acciaio 400-450-500.

*We have delta cutting, with one or two chamfer cutters, with standard size or cut to size in natural steel HB250 and tempered HB400-HB500*

*The under-blades are designed with steel profiles with HB400 or HB500 hardness, being more durable and therefore have a longer duration than competitors. Interchangeable with original, Caterpillar, Volvo Hitachi, Doosan, Case, New Holland, Liebherr, Hunday. On request is possible to have under-blades in Esco Max-Temp Carbide steel both in original and custom sizes. The carbide is a product made of a Max-Temp steel simple blade to which are applied tungsteno carbide plates of length of 1' (25.4mm) through a metallurgic process.*

*The Tungsten carbide as it as an average hardness of 700HB makes the under-blades about 3.5 times more durable than standard. On request, we supply standard or customized under-blades profiles in steel 400-450-500*



## OFFICINA RIPARAZIONI/ REPAIRS WORKSHOP

Effettuiamo qualsiasi lavoro di ripristino danno strutturale/usura riportato dalle vostre attrezzature (benna escavatore/pala, benna miscelatrice, cassone camion, pinza frantumatrice, barenatura di braccio escavatore/pala e attacco benna).

Le nostre attrezzature: calandra oleodinamica, geometria variabile a tre rulli, tagli plasma, 4 saldatrici a filo, barenatrice.

*We carry out any repair work for structural damage /wear for your equipments (Excavator bucket /Shovel, mixer buckets, truck crane, crushing clamp, excavator arm, shovel and tie bucket )*

*Our equipment: oleodynamic calender, variable three-roll geometry, plasma cutting, 4 wire welding machines, boring machine.*



## SISTEMI DI PULIZIA / CLEAN SOLUTION

Sistemi per la filtrazione del carburante e lubrificante in grandi quantità. La sofisticazione dei macchinari attuali, come l'aumento delle pressioni di iniezione sui motori diesel, richiede livelli di pulizia più elevati rispetto al passato. A tal riguardo Donaldson, sempre sensibile alle problematiche, ha sviluppato una serie di prodotti (filtri e teste filtro, collettori, ARV, sfiatatoi TRAP) che, applicati sugli impianti fissi (distributori) piuttosto che mobili (carrello filter cart), garantiscono in uscita il raggiungimento dei livelli di pulizia ISO richiesti dal costruttore.

*The sophistication of current machinery, such as an increased injection pressures on diesel engines, requires higher levels of cleanliness than in the past. Donaldson, always, sensitive to the issue has developed a range of products ( filters and filter heads, manifolds, ARV; TRAP vent valve ), which are applied to fixed installation (gas station) rather than mobile ones ( filter cart ) ensuring the ISO cleansing levels required by the manufacturer.*



## FILTRAZIONE / FILTRATION

Donaldson è leader mondiale nel settore produttivo di sistemi di filtrazione e dei relativi ricambi e consumabili. Donaldson è al servizio dei clienti nei mercati dei motori industriali e diesel inclusa la pulizia dell'aria, la purificazione dell'aria compressa e gas, la rimozione di fumi, polveri e nebbie oleose. Donaldson offre soluzioni di filtrazione innovative per prestazioni superiori e intervalli di manutenzione più lunghi.

*Donaldson is a world leader in the production of filtration system and related spare parts and consumables. Donaldson is at the customer's service in the market of industrial and diesel engines including air cleaning, compressed air and gas purification, removal of fumes, powders and oily mists. Donaldson offers innovative filtration solutions for higher performance and longer service intervals.*



## RICAMBI PER SPAZZATRICI / SWEEPERS SPARE PARTS



Disponiamo di ricambi per spazzatrici (anelli, rulli e spazzole in PPL e/o acciaio), per qualsiasi richiesta in merito non esitate a contattarci allo 0365/823280 oppure inviando una mail a: [commerciale@gioricambi.it](mailto:commerciale@gioricambi.it)

*We have spare parts for sweeper (rings, roller and brushes in PPL and/or steel), if you have any questions please do not hesitate to contact us at +0039 0365/823280 or send mail to: [commerciale@gioricambi.it](mailto:commerciale@gioricambi.it)*





GIORI

RIVENDITORE AUTORIZZATO

Contattaci per conoscere il tuo rivenditore di zona



Sede centrale **GIORI RICAMBI srl**  
Loc. Fondi, 108 - 25071 AGNOSINE (BS)  
Tel. 0365 823280 Fax 0365 823768  
[www.gioriricambi.it](http://www.gioriricambi.it) - e-mail: [info@gioriricambi.it](mailto:info@gioriricambi.it)

